

I External basement sealing



Wet basements can not be utilised fully and might endanger the structure. We offer three methods for making the basement usable again with a new, permanently safe water-proofing: From outside with plastic-modified thick film sealants, mineral sealing slurries or a cold-adhesive sealing membrane – with that the complete external wall area is treated and thus protected from water penetration. Alternatively the waterproofing can be done by sealing the external substrate from the inside of the basement walls. This method can also be used at a later point of time, e.g. when a new subbasement is added to a house. In this case a sealing of the wall/bottom joint is done by injection.

External basement sealing with bitumen based and mineral waterproofing systems

KÖSTER Bitumen-Primer
KÖSTER Bitumen Emulsion
KÖSTER Polysil® TG 500

KÖSTER KB-Flex 200
KÖSTER KSK Triangular Ribbon
KÖSTER Joint Sealant FS-V
KÖSTER KB-Fix 5
KÖSTER Waterstop

KÖSTER NB 1 Grey
KÖSTER NB 1 "Fast"

KÖSTER KSK Triangular Ribbon
KÖSTER Repair Mortar
KÖSTER Repair Mortar Plus
KÖSTER Waterstop

KÖSTER SD Protection and Drainage Sheet

bitumen based:
KÖSTER KBE Liquid Film
KÖSTER Bikuthan® 2C Supertight
KÖSTER Bikuthan® 1C Supertight
KÖSTER Deuxan® 2C Extratight
KÖSTER Deuxan® 1C
KÖSTER Glass Fibre Mesh

mineral:
KÖSTER NB 1 Grey
KÖSTER NB 1 "Fast"
KÖSTER Restoration Slurry
KÖSTER NB Elastic Grey
KÖSTER NB Elastic White
KÖSTER NB Elastic 1C White

External basement sealing with cold-adhesive sealing membranes

KÖSTER Bikuplan® Special Joint Tape
KÖSTER Flex Tape K 120

KÖSTER KSK Primer SP
KÖSTER KSK Primer LF
KÖSTER KSK Primer BL

KÖSTER NB 1 Grey
KÖSTER NB 1 "Fast"
KÖSTER Restoration Slurry
KÖSTER NB I Flex

KÖSTER KSK Triangular Ribbon
KÖSTER Repair Mortar
KÖSTER Repair Mortar Plus
KÖSTER Waterstop

KÖSTER Bikuplan® KSK AW 15
KÖSTER Bikuplan® KSK SY 15

KÖSTER SD Protection and Drainage Sheet

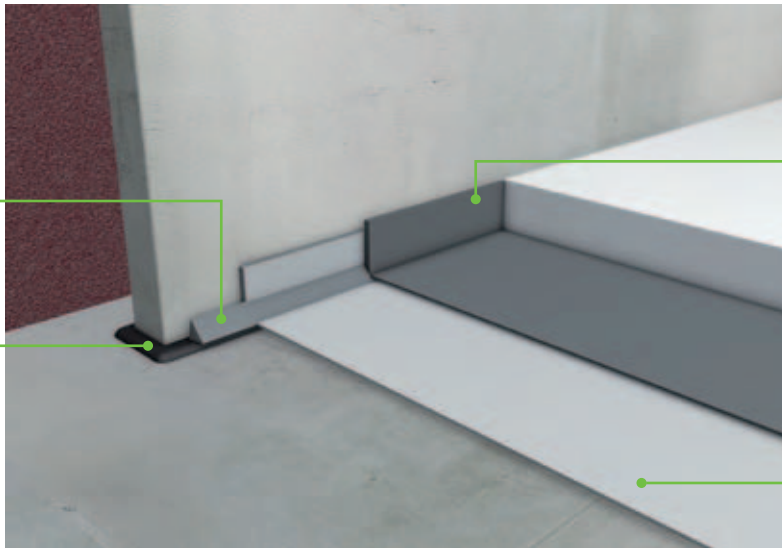
KÖSTER BS 1 Bitumen Paste
KÖSTER KBE Liquid Film

II Internal basement sealing



The basement is sealed internally without excavating the external basement areas. This means that the basement is permanently sealed without the necessity to do any sort of earthwork. This type of waterproofing can be done even when flowing water is present. The sealing against pressurised water is achieved with a special coating system. Furthermore a diffusion-open restoration plaster is applied after successful waterproofing.

Internal basement sealing on bottom slab with mineral slurries



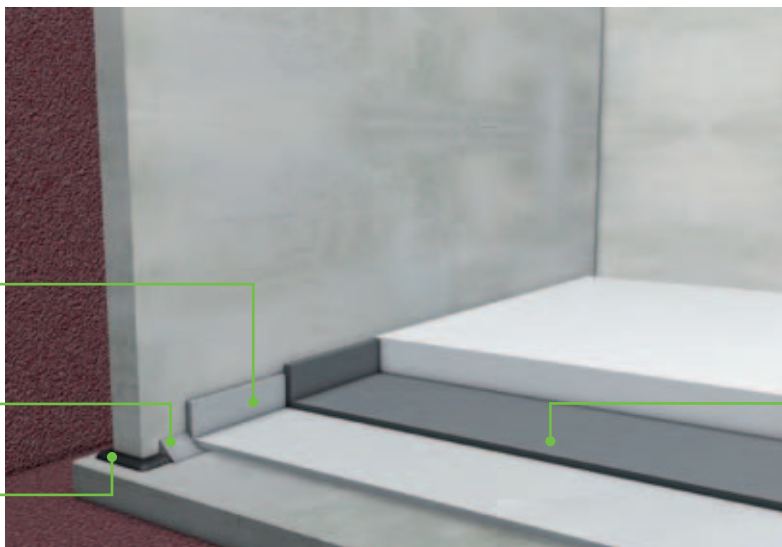
KÖSTER Repair Mortar
KÖSTER Repair Mortar Plus
KÖSTER Waterstop

KÖSTER NB 1 Grey
KÖSTER NB 1 "Fast"
KÖSTER Restoration Slurry
KÖSTER NB Elastic Grey
KÖSTER NB Elastic White
KÖSTER NB Elastic 1C White
KÖSTER KD System

KÖSTER NB 1 Grey
KÖSTER NB 1 "Fast"
KÖSTER Restoration Plaster
KÖSTER NB Elastic Grey
KÖSTER NB Elastic White
KÖSTER NB Elastic 1K White
KÖSTER KD System
KÖSTER NB 1 Flex
KÖSTER SB Bonding Emulsion

KÖSTER Polysil® TG 500

Internal basement sealing on bottom slab with cold-adhesive sealing membranes



KÖSTER KSK Primer SP
KÖSTER KSK Primer LF
KÖSTER KSK Primer BL

KÖSTER Repair Mortar
KÖSTER Repair Mortar Plus

KÖSTER Bikuplan® KSK Fix-Tape 10 AW

KÖSTER Bikuplan® KSK AW 15
KÖSTER Bikuplan® KSK SY 15
KÖSTER Bikuplan® KSK ALU 15
KÖSTER Bikuplan® KSK ECO 10
KÖSTER Bikuplan® KSK DS 15

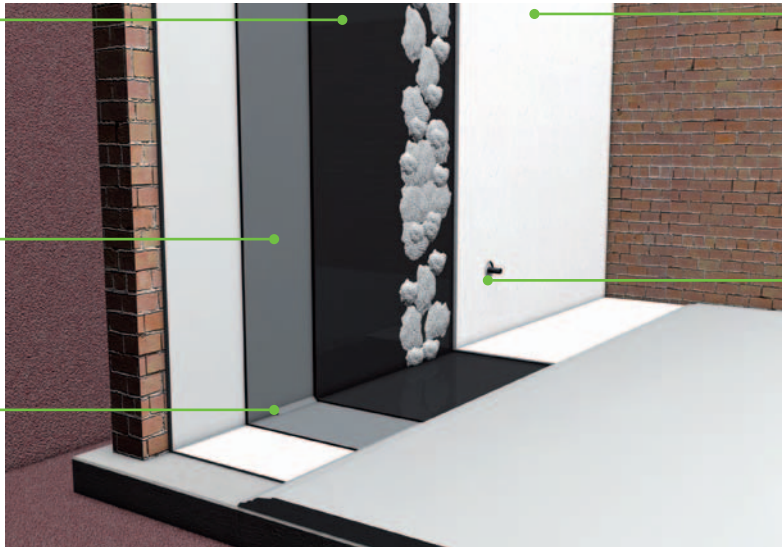
Internal basement sealing against ground moisture, non-pressurised and pressurised water

Sealing with KÖSTER systems:

KÖSTER Polysil® TG 500
 KÖSTER NB 1 Grey
 KÖSTER NB 1 "Fast"
 KÖSTER Restoration Slurry
 KÖSTER NB 2 White

Surface levelling / jointing
 (if necessary)
 KÖSTER Repair Mortar
 KÖSTER Repair Mortar Plus

KÖSTER Repair Mortar
 KÖSTER Repair Mortar Plus
 KÖSTER Waterstop



KÖSTER Restoration Plaster 1 Grey
 KÖSTER Restoration Plaster 2 White
 KÖSTER Restoration Plaster 2 "Fast"
 KÖSTER Restoration Plaster 2 „Light“
 KÖSTER Restoration Plaster 2 "Light
 and Fast"
 KÖSTER Restoration Plaster „E“ Grey
 KÖSTER Restoration Plaster Coat

KÖSTER KB-Flex 200
 KÖSTER KB-Fix 5
 KÖSTER Joint Sealant FS-V
 KÖSTER Waterstop

KÖSTER Restoration Plaster Key

KÖSTER Polysil® TG 500

Internal basement sealing against flowing water

KÖSTER KD System:

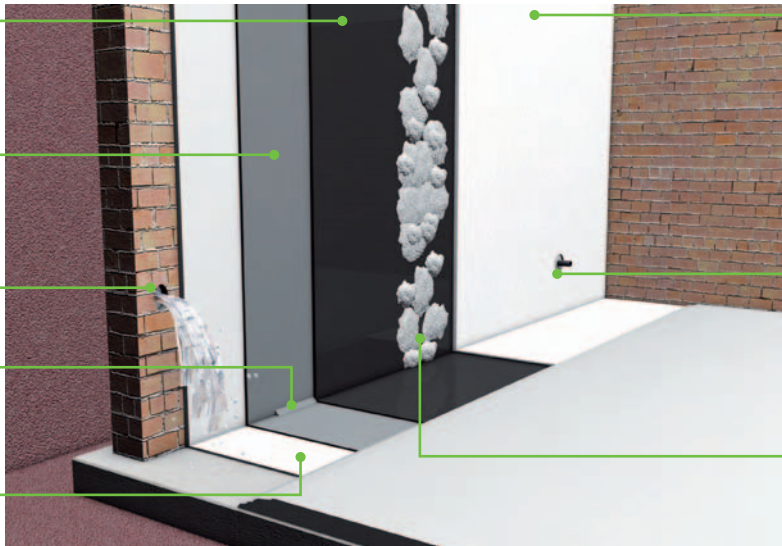
KÖSTER KD 1 Base
 KÖSTER KD 2
 KÖSTER KD 3 Sealer

Surface levelling / Jointing
 (if necessary)
 KÖSTER Repair Mortar
 KÖSTER Repair Mortar Plus

KÖSTER KD 2
 KÖSTER Waterstop

KÖSTER Repair Mortar
 KÖSTER Repair Mortar Plus
 KÖSTER Waterstop

KÖSTER Polysil® TG 500



KÖSTER Restoration Plaster 1 Grey
 KÖSTER Restoration Plaster 2 White
 KÖSTER Restoration Plaster 2 "Fast"
 KÖSTER Restoration Plaster 2 „Light“
 KÖSTER Restoration Plaster 2 "Light
 and Fast"
 KÖSTER Restoration Plaster „E“ Grey
 KÖSTER Restoration Plaster Coat

KÖSTER KB-Flex 200
 KÖSTER KB-Fix 5
 KÖSTER Joint Sealant FS-V
 KÖSTER Waterstop

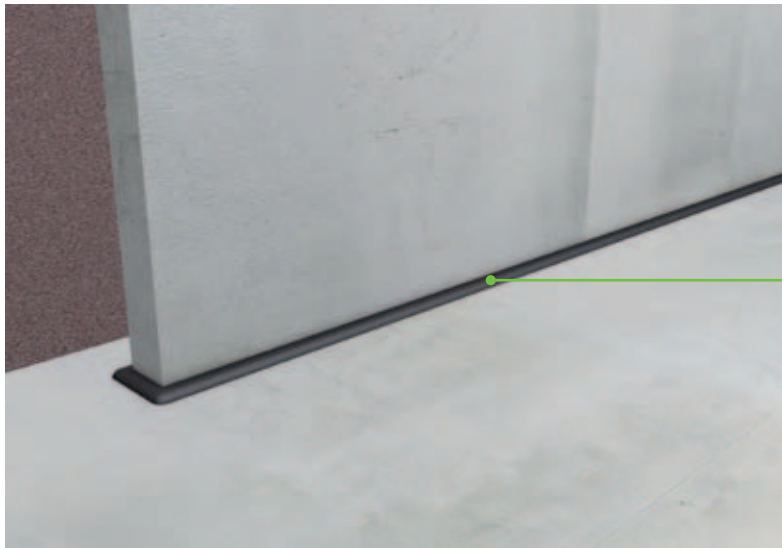
KÖSTER Restoration Plaster
 KÖSTER Restoration Plaster Key

III Horizontal waterproofing



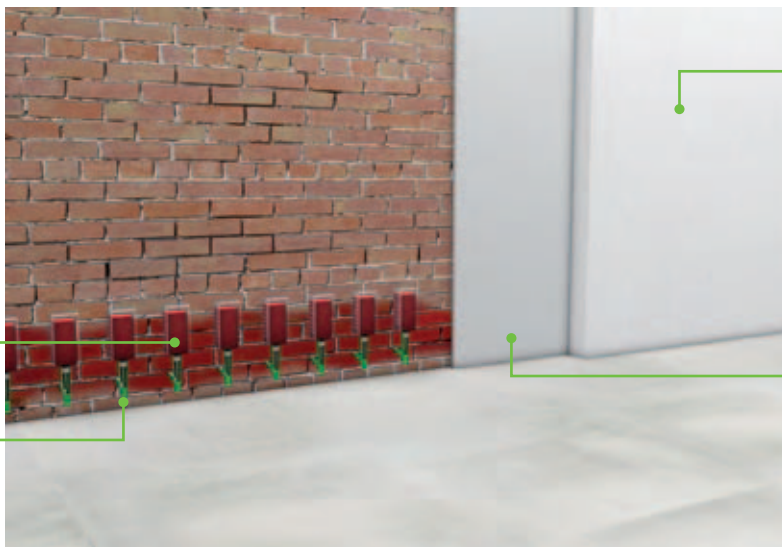
Rising dampness in masonry on a continuing basis leads to considerable damages. Indication of these damages are salt efflorescence, flaking plaster, rotting wall-paper and formation of harmful mould. With a patented system an anti-rot and permanently flexible synthetic resin is injected into the masonry. Thus a subsequent horizontal waterproofing is achieved and capillary rising moisture is successfully stopped.

Horizontal waterproofing underneath rising walls



KÖSTER NB I Grey
KÖSTER NB I "Fast"
KÖSTER Restoration Slurry
KÖSTER NB Elastic Grey
KÖSTER NB Elastic White
KÖSTER NB Elastic 1C White
KÖSTER Bikuplan® Fix Tape 10 AW

Horizontal waterproofing with unpressurised grouting system



KÖSTER Crisin® 76
KÖSTER Mautrol® Liquid Sealant

KÖSTER Suction Angle
KÖSTER Capillary Rod

KÖSTER Restoration Plaster 1 Grey
KÖSTER Restoration Plaster 2 White
KÖSTER Restoration Plaster 2 "Fast"
KÖSTER Restoration Plaster 2 "Light"
KÖSTER Restoration Plaster 2 "Light and Fast"
KÖSTER Restoration Plaster „E“ Grey
KÖSTER Restoration Plaster Coat

KÖSTER Polysil® TG 500